

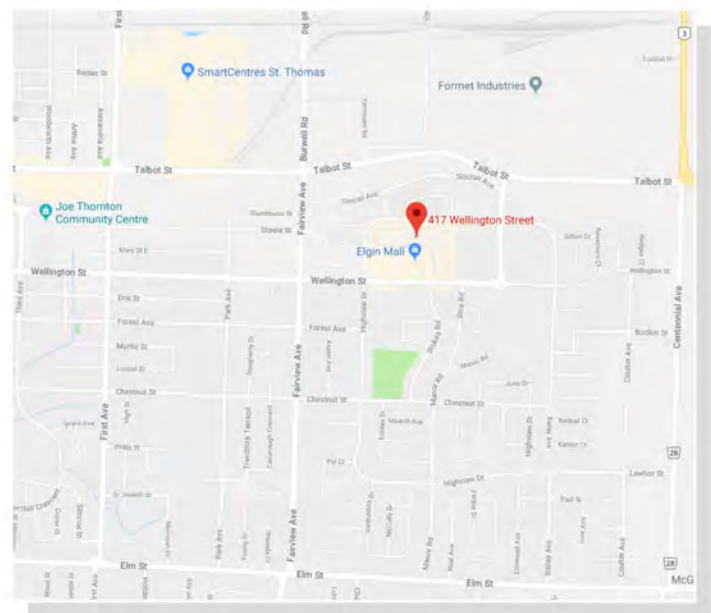


LOCATION:

Wellington Street east of Fairview Avenue, St. Thomas, Ontario

PROPERTY HIGHLIGHTS

- 305,000 sq. ft. shopping centre (the only enclosed mall in St. Thomas and in Elgin County)
- Over 40 shops and restaurants
- Tenants include Metro, Galaxy Cinemas, Giant Tiger, Dollarama, Fit 4 Less and Subway
- 20 acre site
- Parking for over 1,400 cars
- The only movie theatre (6 screen) in St. Thomas and in Elgin County
- Surrounded by homes and highrise. New residential development to the south of the centre
- St. Thomas population (including Central Elgin and Aylmer): 64,835
- Elgin County population: Over 90,000



For more information contact:

Jay Burstein

jay@elgincentre.com

416-520-6824

6 Tracey Blvd.

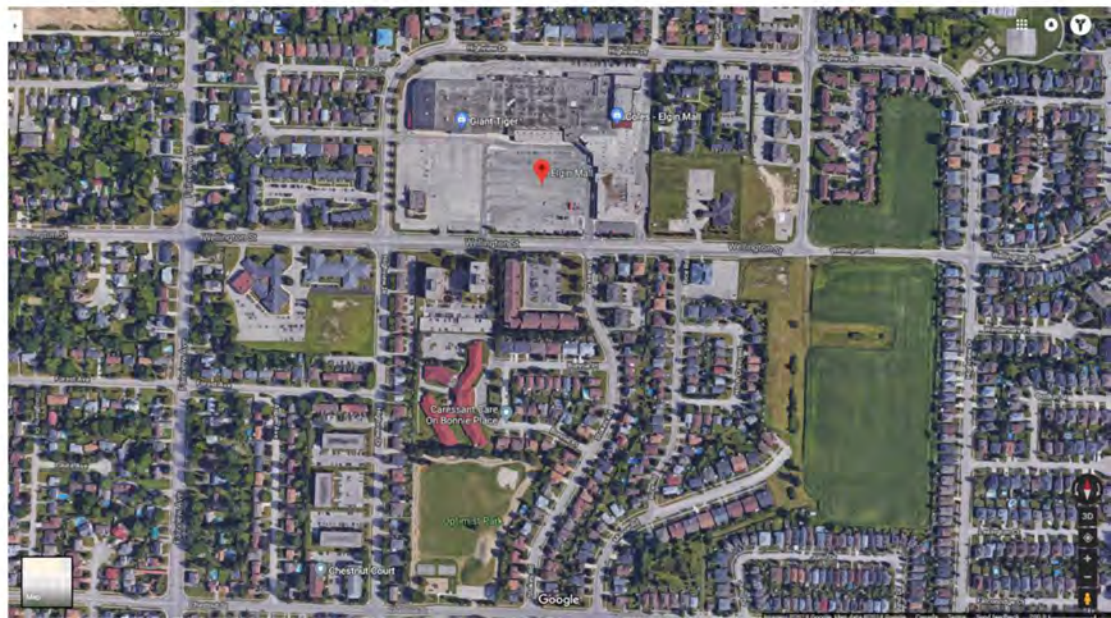
Brampton ON L6T 5R9



For more information contact:
Jay Burstein
jay@elgincentre.com
416-520-6824
6 Tracey Blvd.
Brampton ON L6T 5R9

DEMOGRAPHICS

	ST. THOMAS	15 MIN. DRIVE
Total Population	40,360	64,835
Average HH Income	\$78,820	\$84,310
Expenditure per HH	\$81,210	\$97,162



For more information contact:
Jay Burstein
 jay@elgincentre.com
 416-520-6824
 6 Tracey Blvd.
 Brampton ON L6T 5R9

ADDITIONAL PROPERTY VIEWS

